

Diesel pump 100 l/min

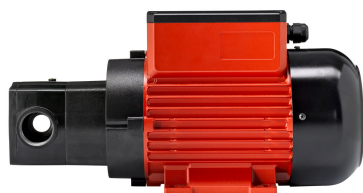
230 V-1~AC-50 Hz-EUS



Item number: 23 433
EAN: 4048358234339
Discount group: D

Technical data

Connecting cable, length (m): 2
 Connection suction side: G 1" female
 Connection discharge side: G 1" female
 Hydraulic data
 Pump design: vane pump, selfpriming
 Delivery rate under free discharge (l/min): 100
 Discharge pressure up to (bar): 2,2
 Suction height (m): 5
 Pumping media: fuel oil and diesel
 Motor data
 Insulation class: F
 Highest permissible limit temperature (°C): 155
 Voltage (V): 230
 Frequency (Hz): 50
 Power consumption (A): 5,7
 Power (kW): 1,2
 Thermal protection: self resetting
 Duty cycle (min): Continuous operation – a real endurance runner
 Torque (Nm): 4,1
 Rotation speed (rpm): 1400
 Type of construction: IMB 3
 Safety class: IP54
 Materials of parts in contact with liquid
 Seals: FKM (Viton®)/NBR
 Pump housing: AISi 12 (sea water resistant)
 Rotor: GG 25
 Vane: POM
 Dimensions LxWxH (mm): 320 x 135 x 190
 Weight (kg): 10,08



Specification

- Vane pump, with integral bypass
- On/Off switch
- Siphon protection acc. to WHG (German government regulation for environmental care), continuously active
- Installation of flowmeter NUMERlxx³, three digits, is possible (23 192)

Special notes

- First class construction of electric machines and pumps
- Designed for a long service life
- Encapsulation of the electric motor, which, in case of extreme temperature fluctuations, largely prevents the formation of condensed water and of short-circuits resulting thereof
- Motor and switch case made of shock resistant, die-cast aluminium
- Continuous operation – a real endurance runner
- Suction height 5 m
- Small tolerances provide a high suction- and pressure performance
- Pump case freely positionable in all 90° positions



Packaging

Dimensions LxWxH (mm): 338 x 200 x 196

Weight including package (kg): 10,68
Packing unit: 1,0

